



## Pest Cast

*The Row Crops IPM Newsletter for the LRGV, a cooperative project of Texas AgriLife Extension Service and the Cotton & Grain Producers of the lower Rio Grande Valley*

Danielle Sekula  
IPM Extension Agent

Volume XLVII

Issue 3, April 18, 2025

### General Situation

Incredibly windy down in the LRGV, with wind gusts of 23- 37 mph. We continue to have highs of 88-90°F and lows in mid 70s at night. Many growers continue to cultivate and apply fertilizer/herbicide spray treatments working around these high winds.

### Cotton

Not much going on in cotton, still very clean of any pest activity this week. Only picking up on very light and in some places moderate cotton aphid populations but nothing worth treating for as of yet. We do have squaring cotton and I only picked up on 1 flea hopper out of all the fields scouted this week.

### Sorghum

Sorghum still looking clean of pests , no sugarcane aphids. Picking up a handful of cornleaf aphids in the whorl but that's about it. There is a lot of sorghum that just emerged this week and then we have vegetative stages all the way to flag leaf stage.

### Corn

We are starting to see moderate populations of corn leafhopper nymphs and adults (2-3 per plant) in southern Cameron County (Los Indios, San Benito, Harlingen areas) closer to the river in tasseling corn. They are very hard to scout for and tend to hide under that tassel closer to the stem in the moisture where you see light populations of cornleaf aphids hiding as well. In vegetative corn, V 12-14 we are picking up on a handful of corn leafhoppers but very hard to find them hiding in the whorls. For the most part I am mainly seeing populations of Corn leafhoppers in the southern Cameron County area closer to the river. I picked up corn leafhoppers in tasseling corn in Rio Hondo, and Monte Alto areas but very



Figure 1: Corn leafhopper adult

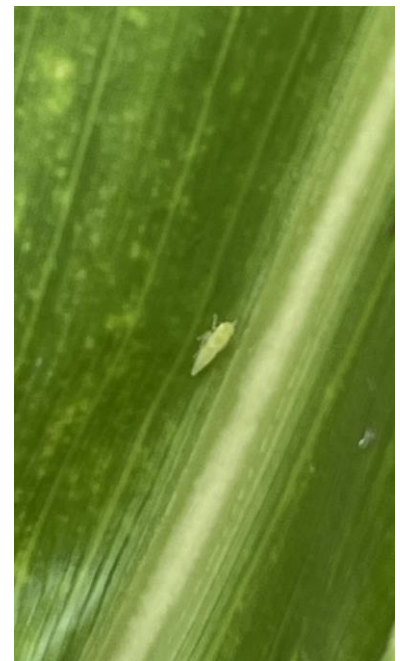


Figure 2: Corn leafhopper nymph

few, maybe 1-2 CLF per 50 -75 plants, again very hard to find them. I have not picked up any corn leafhoppers in Willacy or Northern Cameron County areas. With that said we are passed the critical stages V1- V8, where corn leafhoppers can cause the most damage transmitting viruses as they feed. We will continue to monitor them and in fields where their populations seem to be exponentially

increasing consider spray treatments to avoid the honey dew secretions and sooty mold that follows that inhibits the corns growth development.

### **Audio Update for South Texas IPM in row crops & Corn leaf hopper updates**

For those who would like to sign up, you will be receiving weekly corn leafhopper updates and weekly updates on LRGV row crops and Costal Bend areas. We hope that you will follow this link and sign up: <https://www.texasinsects.org/south-texas.html> . You will receive text when a new update is available and can listen to it right there in your truck, tractor, or wherever you may be. This does not replace the Pest Cast Newsletter but is an extra source of information to have available. Thank you.

**Signing up is easy:** Click on this link, <https://www.texasinsects.org/south-texas.html>

On the top of the page select:>> **Signup to get a text message when a new post is made.**<<  
Next, Signup for South Texas IPM Updates, by entering your cell number and input if you are a PRODUCER, CONSULTANT, AG INDUSTRY, AGRILIFE OR OTHER. And that's it!

## **2025 Pest Cast Sponsors**

### **Diamond**



- \*Anaqua Farms
- \*Bayer-DeltaPine-Dekalb
- \*Elkins Grain, LLC.
- \*Farmers Crop Insurance
- \*Texas Regional Bank

### **Platinum**



- \*BASF-FiberMax-Stoneville

### **Gold**



- \*Americot-NexGen
- \*Corteva- Phytogen
- \*Hidalgo County Farm Bureau
- \*Sesaco
- \*Simplot

### **Silver**



- \*Adams Farms
- \*Syngenta
- \*RGV Gin Company
- \*Rob See Co.
- \*Ross Gin
- \*Willamar Cotton & Grain