



Extension Education in Zavala County

Making a Difference

2016

The Texas A&M AgriLife Extension Service and its partners have long been dedicated to educating Texans. Extension education evolved nationwide under the 1914 federal Smith-Lever Act, which sought to extend university knowledge and agricultural research findings directly to the people. Ever since, Extension programs have addressed the emerging issues of the day, reaching diverse rural and urban populations.

In Texas, all 254 counties are served by a well-organized network of professional Extension educators and some 100,000 trained volunteers. Extension expertise and educational outreach pertain to the food and fiber industry, natural resources, family and consumer sciences, nutrition and health, and community economic development. Among

EXTENDING KNOWLEDGE *Providing Solutions*

those served are hundreds of thousands of young people who benefit annually from Extension's 4-H and youth development programs.

Texans turn to Extension education for solutions. Extension agents and specialists respond not only with answers, but also with resources and services that result in significant returns on the public's investment. Extension programs are custom-designed for each region of the state, with residents providing input and help with program delivery. Here are just a few highlights of Extension impacts on Zavala county and its people

Zavala County – Summary of 2016 Educational Contacts

Educational Contacts by Marcel Valdez, CEA-ANR

*Office Contact From Office visits-----	110
*Radio Programs -----	5
*Printed News Media Releases-----	180
*Special News Series Releases(Drought, CWD, Program Highlights)-----	8
*Pesticide Applicators Educational Programs-----	72
*Range and Livestock Educational Programs-----	15
*Worker Protection Standards Training(WPS)-----	32
*Agricultural Literacy(Agriculture Ag. Day)education programs for youth-----	560
*Printed News Media Outlets-----	3
*Adjunct Faculty Agreements(School Districts)-----	3
*4-H and Youth Development-----	1,840
*Telephone Calls Office and Cellular Communication-----	645
*Agriculture and Natural Resources Related Contacts -----	891
*Newsletters/mail/e-mail and cellular text-----	380
*Site Visits in county-----	102
*Site Visits out of county regional educational efforts-----	140
*Contacts with other agencies and collaborators-----	269
*Volunteers-----	108
*Contacts made by trained volunteers-----	980
*2016 International Spinach Conference Session Presentations-----	96
*School District teachers and other school district educators-----	79
*Elected officials and other stakeholders in the county-----	35
*Food Safety Training Educational Contacts-----	230
*International Contacts Through International Spinach Conference-----	13
*Crop/Results Demonstrations Tours-----	78

Zavala County – Summary of 2016 Educational Contacts

Educational Contacts by Phyllis Varnon, CEA-CED

	Office Visits	29
	Federal, State and Local Agencies/Officials	187
	Presentations to Businesses/Community and Funding Agencies	1812
	Business (On Site)	86
	Calls	1250
	Emails	658
	Texts	127
Media		
	Radio Shows (144,500 listeners)	5
	Newspaper Articles/News Releases	5
	Newsletters	125
	Social	327
	Volunteers	120
	Youth & 4-H (Ag Day/4-H Judging/4-H Activities)	320
International		
	Mexican Consular	2
	Spinach Conference	65
	Economic Development Administration	124
Training		
	Business in Development Sessions	28
	HUB Workshop	28
	CED Program Committee Members/Planning Groups	217

Agriculture and Natural Resources

The 2016 Zavala County Spinach and Vegetable Crops Improvement program provided clientele with relevant educational programs, research based data and introduced new and innovative practices and technologies to insure production of these commodities now and in the future, to meet the needs of consumers and processors alike. Increase consumer demand for both fresh market and processing spinach drove programming efforts during 2016, which is vital to producers if they are to continue using research based data and information on new spinach disease controlling products, new and improved production and management practices and enhanced spinach variety development areas.

Extension's response to these needs were addressed by many conducting several educational events, activities and programs were conducted during the program year. The following is only a small fraction of highlighted efforts that included:

- *January-Planning meeting for the 2016 spinach and vegetable crops improvement programs.

- *January 24, 2016-A field tour was conducted at the Del Monte Research Farm in Crystal City and sponsored by the Wintergarden Spinach Producers Board, Del Monte Corporation and the Zavala County Leadership Advisory Board to provide a spinach field and provided tour participants with information of spinach varieties being evaluated for disease resistance, and potential for further development for consideration as a commercial viable spinach varieties. Both fresh market and processing spinach cultivars will be evaluated.

- *February-Gather research data from current results demonstrations

- *Submit Call to seed companies for participation in the watermelon variety trials to evaluative watermelon cultivars

- *March-Publish data from 2015-16 spinach fungicide evaluation trials for white rust disease control efforts in spinach.

- *April-Establish watermelon variety trials

- *June-Submit Food Safety Program Proposal to the Winter Garden Spinach Producers Board. The agent received funding for these efforts.

- *July- Harvest Watermelon Variety Trials and gather data on yields, quality and taste testing

- *August-Planning Food Safety Educations Programs for field workers, packing shed workers and producers.

- *September-Meeting to establish research demonstrations and programs for winter crops.

- *October-Establish results demonstrations on spinach fields to evaluate listeria, e-coli-, and salmonella risk in field soils.

- *October- Food Safety Training for Packing Shed Workers. The Extension agent conducted a Food safety training using a Spanish language Food Safety curricula to train packing shed and harvest crew workers about personal hygiene as it relates to food safety and the prevention of contamination of fresh spinach and other vegetables. This onsite training provided producers the necessary documentation to use as part of the Good Agricultural Practices(GAP's) program to comply with USDA and private audits certifying producers as GAP's certified.

- *November-Established fungicide trials to evaluate the efficacy of various fungicides on spinach diseases.

Agriculture and Natural Resources

*November 30 The 2016 International Spinach Conference educational presentations were held at the El Tropicano Hotel in San Antonio Texas. Over 70 registered participants from 8 states and 7 foreign countries participated in this event. For a list of topics presented at this conference please go to <http://spinach.uark.edu/>

*December 1, 2016 the International Spinach Conference crop/field tour and closing reception was held in Zavala and Uvalde counties. Participants toured the Del Monte spinach cannery in Crystal City/Zavala County, observed the latest fresh market baby leaf spinach harvesting technologies, toured spinach variety trials in Zavala County and enjoyed a Traditional South Texas Closing Reception where customer satisfaction surveys were provided to participant to evaluate the overall effectiveness of the conference.

Participant Satisfaction Results

Activity Title: 2016 International Spinach Conference

Activity Date: December 1, 2016

Number of Participants: 40

Percentages based on 36 respondents to the survey (Response rate = 90%).

Overall:

- 100% of respondents were mostly or completely satisfied with the activity.

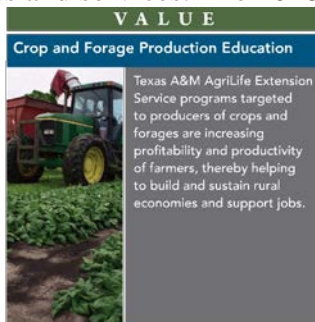
Content:

- 100% of respondents were mostly or completely satisfied with the information being what they expected.
- 100% of respondents were mostly or completely satisfied with the information being accurate.
- 91% of respondents were mostly or completely satisfied with the information being easy to understand.
- 97% of respondents were mostly or completely satisfied with the timeliness of information given on each topic.
- 97% of respondents were mostly or completely satisfied with the helpfulness of the information in decisions about your own situation.
- 97% of respondents were mostly or completely satisfied with the relevance of the examples used.

Instructor(s):

- 100% of respondents were mostly or completely satisfied with the instructor's knowledge level on the subject.
- 100% of respondents were mostly or completely satisfied with the instructor responses to questions.

The conference had an economic impact to the region of over \$75,000 including lodging, registration fees, travel and goods and services. The 2018 International Spinach Conference will be held in Murcia Spain.



Agriculture and Natural Resources

2016 Food Safety Education Programs In Zavala And Surrounding Counties

The Food Safety Modernization Act (FSMA), was signed into law on Jan. 4, 2011, and enables the Food and Drug Administration (FDA) to better strengthen the food safety system. It enables FDA to focus more on preventing food safety problems rather than relying primarily on reacting to problems after they occur. As a key element of this preventive approach, FDA was mandated under FSMA to establish science-based, minimum standards for the safe growing, harvesting, packing, and holding of produce on farms to minimize contamination. With support from the Winter Garden Spinach Producers Board the Zavala County Extension agent conducted several food safety trainings (see table 1) to harvest crews, packing shed workers and other produce handlers on food safety, worker hygiene (proper handwashing techniques) and other areas addressing microbial food safety hazards and methods to adhere to good agricultural practices (GAP's) common to the growing, harvesting, sorting, packing and transporting of spinach in the Winter Garden region of Texas. It is important to note that some of these trainings were conducted in Spanish, some in English and some were bilingual to maximize the participants understanding of the subject matter being taught. The program/training sessions were all evaluated (see table 2) and results shared with producers and harvest/packing crew contractors.

Table 1. 2016 Results- Food Safety Programs Conducted

Date	Location	Number Trained
11/19/16	Winter Garden Produce Uvalde	62
12/3/16	Pentagon Produce-Uvalde	41
12/15/16	Espinica Texas-La Pryor	52
12/30/16	Onion packing shed-Highway 55-Uvalde	43
2013/14	Total reached through training	243

Table 2. Evaluation Food Safety Training Events

Some participants were randomly selected to evaluate the training. The following questions were asked of participants and their responses.

Question	% Responding Yes	% Responding No
Do You think today's training will help you be a better worker	97	3
Did You learn SOMETHING today that you did not know before	100	0
If you had to come to another food safety training would you attend	90	10
Do you think food safety is important in your job	98	2

Note: The questions were simple and in some cases an oral evaluation was conducted due to the individual reading levels and reading abilities of the participants. The purpose is to obtain some kind of relevant data regarding the training and modify, adjust and restructure teaching and delivery methods. Some participants were evaluated in Spanish and some in English due to language proficiency.

Agriculture and Natural Resources



Results demonstrations are an important part of the Zavala County Extension educational efforts. Result demonstrations and applied research projects remain a valuable educational tool for producers in Zavala county. These serve to compare and differentiate between such things as varieties, pesticides, seeding rates, crop potential for commercial production, evaluation of disease resistant varieties and many other best management or good agricultural practices. Through the use of these tools, producers, land owners and consumers who volunteer their land and infrastructure for these projects learn along with the Extension professionals. The non-biased results of projects are shared in several venues, such as educational meetings, newsletters, news articles and on Extension websites. During the 2016 program year the Zavala County Extension Agent in collaboration with Dr. Larry Stein and several producers conducted 4 demonstrations. These were:

Sorghum Variety Trials-March-June 2016 Crawford Farms-La Pryor Zavala County
9 varieties of sorghum were evaluated for disease resistance, water requirements and yield

Watermelon Variety Trials-April 12-July 22, 2016 Tiro Tres Farms-Crystal City-Zavala County
17 watermelon varieties were evaluated for yield potential, disease resistance, sugar content and taste

Spinach Fungicide Trials-November 2015-February 2016-Del Monte Corporation-Crystal City-Zavala County
8 different fungicides were evaluated for their effects in controlling white rust disease in spinach

Spinach variety Trial-October 2015-January 2016-Del Monte Outdoor Nursery-Crystal City-Zavala County
245 spinach varieties were evaluated for resistance to white rust, anthracnose, quality and plant vigor

Results of these trials were shared with cooperating producers and the agent prepared a special news release providing data and results of these trials. Results of these trials can be found on <http://spinach.uark.edu/> and <http://aggie-horticulture.tamu.edu/vegetable/variety-trials/statewide-watermelon-trials/> or upon request from the Zavala County Office of the Texas A&M AgriLife Extension Service.

Agriculture and Natural Resources

TEXAS A&M
AGRILIFE
EXTENSION

Welcome
歓迎
Welkom
Bienvenidos
ようこそ

2016 International Spinach Conference
2016 Conferentie Internationale Spinazie
2016 国際 菠菜 會議
Conferencia Internacional de Espinaca 2016
2016 国際 ほうれん草 會議





The meeting was well represented by participants from the spinach industry and included people from the seed industry, research and extension, growers, producers, and shippers, and pest management professionals. According to the conference registration records participants at the 2016 conference included attendees from Australia, Europe, China, Japan, Canada, Denmark, the Netherlands and Northern Ireland and from Texas, California, Arkansas, Washington, Oregon, Arizona, Colorado and New York. The tour concluded with a dinner/reception at the Uvalde County FairPlex in Uvalde before the group loaded the tour bus to return to the conference hotel in San Antonio. A very big thank you to many sponsors, volunteers and cooperators who made this event possible.



Pictured above are some of the 2016 International Spinach Conference participants at the spinach packing facility located in La Pryor-Zavala County and one of Extension Cooperating producers facility Tiro Tres Farms.

Acknowledgements:

Zavala County Office of the Texas A&M AgriLife Extension Service wished to acknowledge and thank the Zavala County Crops Committee members, The Winter Garden Spinach Producers Board, Del Monte Corporation, Tiro Tres Farms, Crawford Farms and Espinica Texas for working collaboratively and jointly with spinach producers, and other vegetable producers in addressing difficult production issues facing vegetable crops producers in Zavala County. Special thanks to Dr. Larry Stein and University of Arkansas for providing assistance with the International Spinach Conference. Many of these efforts will be continued in 2017.

Family and Consumer Sciences

Zavala County does not have a family and consumer sciences agent, however, the Zavala county ANR agent promoted 4-H FCS Programs In Zavala County. The agent led recruitment efforts of FCS project volunteers, promoting FCS projects through 4-H meetings, 4-H newsletters, news media releases and training of potential youth FCS project volunteers at project leader meetings and workshops. The agent also utilized the Texas A&M FCS website for resources as well as Health South Texas Initiative Resources to use in educational strategies being addressed. Youth Healthy Lifestyles programs, and related youth health and nutrition programs, were also be part of these recruitment efforts. The Extension Agent worked closely with family service agencies in Zavala County and neighboring Family and Consumer Science Agents(FCS) to provide FCS related programs.

The Zavala County ANR agent also serves on the District 12 FCS events committees in the planning and implementation of FCS 4-H district events such as the district 12 food show, food challenge and fashion show.

As a result over 14 Zavala County youth participated in the annual Zavala County Junior Fair with food and clothing projects. Physical education coaches in the La Pryor Independent school district utilized a modified version of the Walk across Texas program with 85 3-5 grade physical education students in March of 2016. These efforts will continue in 2017.



4-H and Youth Development

2016 Zavala County Science of Agriculture (Ag Literacy/Awareness)

Developed by Marcel Valdez, County Extension Agent-ANR

Relevance

Zavala County is considered a very rural county, however, for all practical purposes youth are further removed from the farming and ranching industries in Zavala county and do not have a concept of the importance of agriculture and how it impacts their daily lives.

Response

The 2016 Zavala County Science of Agriculture education program was developed and the Texas AgriLife Extension Service in Zavala County developed the following activities to address this relevant issue. As a result The Zavala County Leadership Advisory Board (LAB) in cooperation with the Zavala County Farm Bureau and the Zavala County Youth Board met to discuss how to address this issue of concern. It was determined that an educational program must be established to address this issue in Zavala County. This program will target approximately 260 4th and 5th grade students in the three public schools in Zavala County. Additionally another 420 youth were reached in Zavala and Uvalde Counties through a similar program sponsored by the Uvalde chapter of the Texas Agri-Women organization.

*December 1 Invitations and Informational fliers sent to the La Pryor Independent School District, Crystal City Independent School District and the Uvalde Independent School District elementary campuses about the upcoming Zavala County Junior Livestock Show on January 11, 2016.

*January 11, 2016 the Extension Agent and 4-H livestock project exhibitors made a presentation about 4-H animal projects, selection, feeding, management and the importance of these animals in our everyday lives to school tour groups attending the Zavala County Livestock Show.

*February- the Zavala County Youth Board meets with the Zavala County Farm Bureau to plan the 2016 Zavala County Ag. Day to be held on March 10, 2016

* May Zavala County Ag. Day was Held on May 10, 2016. Following the event follow up educational 240 support materials about the importance of Agriculture in our daily lives was sent to all teachers scheduled to participate in the 2016 Zavala County ag. day. The Zavala County Farm Bureau was instrumental in providing this opportunity to school children in Zavala county and promoting the importance of agriculture and related industries in our area.

* September-The Zavala County Extension Agent was invited by the Uvalde Chapter of the Texas Agri-Women group to assist with the Uvalde County Ag. Fair. This event also serves students from Zavala County that attend school in Batesville which is part of the Uvalde School District located in Zavala County. .

4-H and Youth Development

VALUE

Science of Agriculture



Texas A&M AgriLife Extension "Science of Agriculture" programs teach youth about the role agriculture plays in the world and in their lives. Through their participation in these programs, youth become better educated voters and consumers.

Results

As a result of these efforts a total of 245 elementary students participated in the Zavala County Science of Agriculture program. 230 out of 245 students indicated that they had a better understanding about agriculture and how important it is in our everyday lives and the remaining 15 students indicated a increase knowledge about agriculture in general. Teachers were provided with a post activity survey and they all indicated that they would participate in such programs in the future.

452 students out of 460 participating in the AgriLife Extension and Texas Agri-Women sponsored agriculture literacy event in September indicated an increased awareness and knowledge about how agricultural products affect everyday living and how vital the agricultural industry is to the county and region.

Acknowledgement:

The Zavala County AgriLife Extension Service would like to acknowledge all of the teachers who attended and all of the presenters that made presentations on various agricultural topics on Ag Day. The program presenters were also recognized with certificates of appreciation by the Zavala County Farm Bureau and the Zavala County Leadership Advisory Board. This educational program will be continued in the 2017 program year.



4-H and Youth Development

2016 Education Fund Account Establishment by 4-H Youth Program

Relevance

According to collegeforalltexans.com the average cost for a public institution of higher learning in Texas is \$22,265 for dependent students living off campus who enroll in 15 credit hours in both fall and spring semesters. These cost are even higher if a post secondary student is considering enrolling in a private institution. U.S. According to the Bureau of Economic Analysis the median per capita income in Zavala County is \$21,747 which no doubt a higher education expense will definitely put a financial burden on the average family in Zavala county.

Now in its 9th year of existence the Zavala County Education Fund Account Establishment by 4-H youth program continues to flourish despite economic uncertainty. Each year like hundreds of 4-H members across Texas, Zavala County 4-H youth involved with animal projects gain financial resources from the participation and sale of animal projects in the annual Zavala County Junior Livestock Show in January.

The Zavala Agricultural Exposition, Inc.(ZAE) show board, 4-H Adult Leaders and 4-H and Youth Development Committee members are concerned that many participants in this program are not investing some of these earnings through the establishment of checking or savings accounts by 4-H youth to meet or contribute to future educational needs.

In January of the 2016 on average each 4-H member received \$1,860.00 per animals sold. If an exhibitor participates with animal projects for the entire 4-H career this total could potentially generate on average over \$19,000.00 per 4-H youth during their consecutive participation in the program. This is a substantial amount that could be managed by the 4-H youngster and parents to learn financial responsibility and invest for future educational needs.

Response

The Texas A&M AgriLife Extension Service office in Zavala County developed the following activities to address fund account establishment by 4-H youth.

*January 75 4-H members participated and sold 4-H Animal Projects at the Zavala County livestock show.

*February -Survey All 4-H animal project sale participants to determine if they do or do not have a savings or checking account in their name.

*March - Zavala County Bank workshop for 4-H parents and members about requirements and procedures to establish a savings or checking accounts for 4-H Youth

*April-National Teach The Children to Save Day Training event for all county 4-H parents and Youth.

*April- Distribution of Checks to 4-H members who sold animal projects in the 2015 Zavala County Junior Livestock Show in January.

4-H and Youth Development

*May-Zavala County Bank Survey to obtain number of 4-H Youth Who have established a savings or checking account at this financial Institution.

*May- Compile data from surveys and present to 4-H and Youth Development Committee.

*June- Presentation to Zavala County Commissioners Court about the Education Fund Account Establishment by 4-H Youth program results and summary.

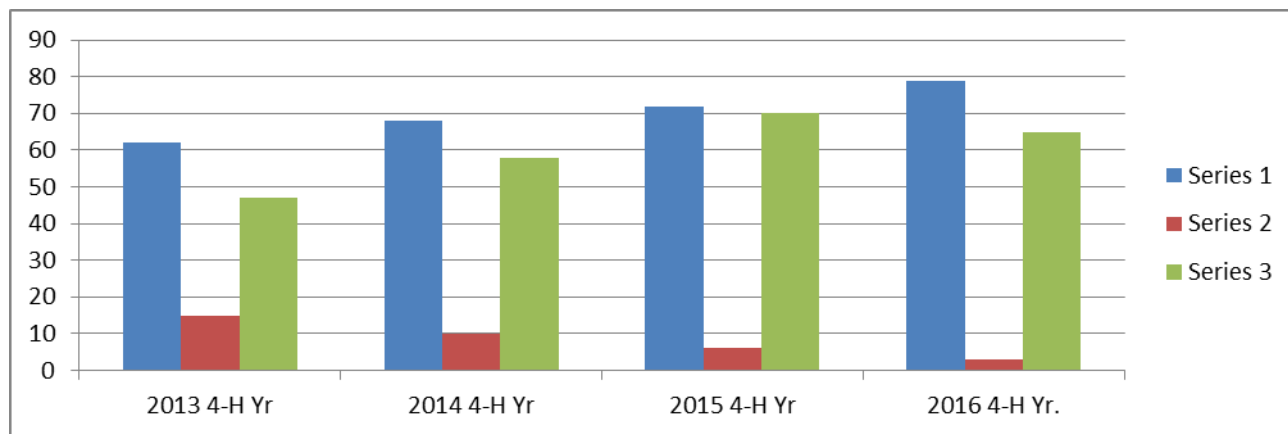
*September- County Newsletter and Mass Media efforts promoting the education Fund Establishment program to new 4-H members and families for the coming program year.

*October- Workshop and planning meeting for family financial planning

*November- College Night-Information to parents and 4-H members of current tuition and fees and average semester cost at public and private institutions of higher learning.

Results

A 4 year breakdown by number of 4-H participants(Blue), 4-H members not participating(Red) and 4-H members with established savings accounts established with funds/proceeds from sale of animals is shown in the Table below. Please note that the decrease in number of 4-H youth with a savings or checking account is due to those exiting the program due to graduation from school or moving out of the County: Source: Zavala County Bank and Capital Bank of Texas(Crystal City Branch).



Participants by year: Blue=Total 4-H participants Red=4-H members Not Participating and Green= 4-H members with established savings accounts established with funds/proceeds from sale of animals.

4-H and Youth Development

As a result of this program 92 percent of all 4-H animal project participants have established a checking or savings account in a financial institution in their name. Over the past 6 years of this program over \$240,000.00 dollars are currently in a savings or checking account representing 78 4-H Youth in Zavala County.

The 4-H and Youth Development Committee will continue to recruit new members coming into the 4-H program that will participate with an animal project and who have indicated that they do not have a checking or savings Account. The goal of these efforts is to have at least 90% of new 4-H members who select, show and sale a 4H animal project in the Zavala County Junior Fair to establish a Higher Education Fund Account, utilizing the funds received from this annual event. Donors and supporters of the Zavala County Junior Livestock Show are more reluctant to contribute funds, buy animal projects and support this program if they are aware that strong efforts are being made to insure that their contributions are utilized wisely by the participating 4-H members.

VALUE

Financial Literacy



Texas A&M AgriLife Extension Service financial literacy programs provide adults and youth with basic financial education and resources to help them set and reach financial goals and plan for the future. When Texans make better financial decisions and implement recommended financial management practices, they increase their ability to achieve financial security.

Acknowledgements:

The Zavala County Texas A&M AgriLife Extension Service wishes to thank Mrs. Tammy Ritchie, President of Zavala County Bank, and Capital Bank of Texas, The Zavala Agricultural Exposition, Inc. parents and volunteers who provided assistance and support for these educational efforts. These groups have indicated continued support of these efforts in the 2017 program year.



Pictured above are some of the participants of the 2016 Zavala County 4-H financial literacy presentation conducted by Zavala County Bank staff during a county wide 4-H financial literacy workshop for youth and families.

4-H and Youth Development

Clear Form

Print Form

Save As



4-H YOUTH DEVELOPMENT

Making a Difference in Zavala County

TEXAS A&M
AGRI LIFE
EXTENSION



PRAIRIE VIEW
A&M UNIVERSITY
COLLEGE OF AGRICULTURE
AND HUMAN SCIENCES

Cooperative Extension Program

Annual 4-H Program Summary

County 4-H Youth Involvement

- 3 Chartered Community Clubs
- 76 Members Enrolled in 4-H Clubs
- 93 Youth Reached through Community-based Programs
- 493 Youth Reached through School-Based Enrichment Curriculum

Total Youth Reached

662



County 4-H Leadership, Advisory, and Support Organizations

- 9 Youth Board Members attended 5 Meetings
- 7 County 4-H Council Members attended 6 Meetings
- 12 Adult Leaders & Parents Organization Members attended 6 Mtgs

of Youth Attending

Participation in County 4-H Events

- 4-H Food Show 11
- 4-H Photography Contest 9
- 4-H Animal Project clinics 65
- 4-H Shooting sports 1
- 4-H Leadership Training 19

County Participation in District Events

- District 4-H Election Convention 2
- District 4-H Shooting Sports 1
- District 4-H Council Meetings 3

County Participation in State/National Events

- Photography 3
- San Antonio Livestock Show 35

Most Popular Club Projects in the County

- Goats(meat) 40
- Rabbits(clover kids) 36
- Market Swine 15
- Steers 7
- Photography 17

Most Popular Curriculum in the County

- Science of Agriculture 493
- Walk Across Texas 135

County 4-H Volunteer Support

- 8 Registered & Screened Volunteers Supporting Clubs
- 24 Club Managers, Co-Managers, and Project Leaders
- 565 Hours Contributed by Volunteers in Support of Clubs

Livestock-Show Premium Sale Proceeds*

\$104,560

Includes all projects (4-H and FFA)

Value of Volunteer Time Supporting 4-H

\$12,068



4-H and Youth Development

southtexas.tamu.edu

County 4-H Leadership & Personal Development Programs

- 6 Attended State-level Leadership & Personal Development educational or competitive events
- 12 Attended District-level Leadership & Personal Development educational or competitive events
- 2 Attended District Leadership Lab
- 3 Received 4-H Scholarships valued at a total of \$5,500

Local Training Opportunities for Youth and Adults

12

Significant Leadership & Personal Development accomplishments from county Events & Activities

A trained group of youth Serving in 4-H club officer capacities
Character development of youth through 4-H animal projects
Development of leadership by participating in organized, structured 4-H club meetings

County 4-H Agriculture & Natural Resource Programs

- 95 Livestock Projects (all species)
- 78 Participated in County Livestock Shows
- 14 Attended State-level Livestock Shows
- 9 Attended District-level Agriculture & Natural Resources educational or competitive events
- 23 Youth Trained through "Quality Counts" Program

Local Training Opportunities for Youth and Adults

17

Significant Agriculture & Natural Resource accomplishments from county Events & Activities

Youth and family financial growth through the sale of 4-H animal projects in the county livestock show sale
Increase awareness and knowledge of the importance of agriculture through agricultural literacy program in ANR

County 4-H Family & Consumer Science Programs

- Attended State-level educational or competitive events
- 3 Attended District-level educational or competitive events

Local Training Opportunities for Youth and Adults

4

Significant Family & Consumer Science accomplishments from county Events & Activities

Several youth participated in the foods, nutrition and photography contest at the county livestock show

4-H and Youth Development

2016 4-H Recruitment and Expansion Efforts-Zavala County 4-H Clover Kids Program

Relevance

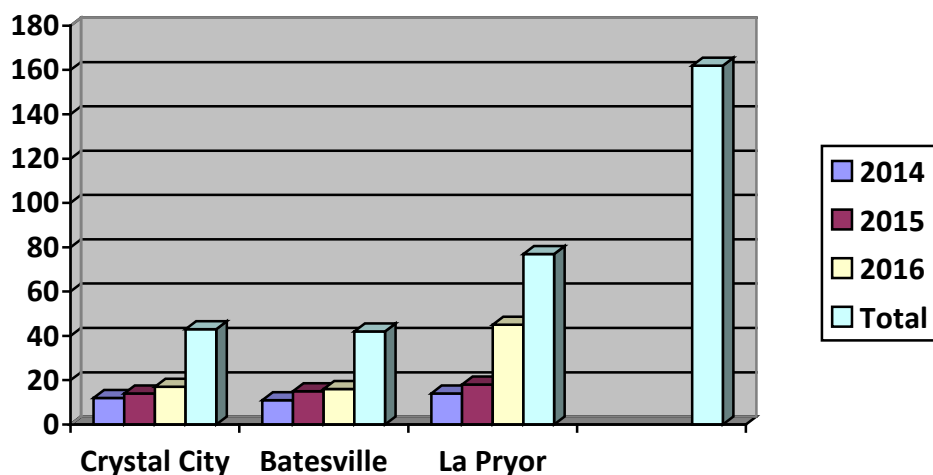
The Zavala County 4-H program was at a stalemate and membership continued to decline as 4-H members exited the program as a result of competing school and graduating. The Zavala County Extension Agent in collaboration with the 4-H and Youth Development committee explored methods and strategies to expand and grow the 4-H program in Zavala County.

Response

The Zavala county Extension agent and 4-H leaders and volunteers decided to try the 4-H clover kids program. Clover kids groups were organized in 4-H club in the county as a SUB-GROUP of existing 4-H club. Each group was assigned to a Clover Kids Group Manager and resources including Clover Kids guidelines and other materials from Texas 4-H were provided to clover kids managers and training provided by the County Extension Agent. The Extension Agent met with all 4-H Clover Kid Group Managers to decide on what project area the groups would focus from the list of projects approved as per Texas 4-H guidelines. It was decided that all clover kids in Zavala county could select the approved projects that would best meet the needs of the young participants. Surprisingly all groups agreed on companion rabbits would be the project best for the participant and families involved. The Extension agent obtained a sponsor to provide trophies for all participants since they are not allowed to compete. The local Livestock Show board allowed the clover groups to bring their rabbits for exhibition and presentation of awards during the local annual livestock show.

Results

Since the inception of the Zavala County 4-H Clover kids Program in 2003 over 500 youth grades K-2 have participated in the program receiving over 500 rabbit trophies from L&W Flying Service-awards sponsor of the program. Of these participants currently 87% of the youth that participate in the Zavala County 4-H Clover Kids Program join a 4-H club in the county once they reach the required age and grade level to enroll in a chartered 4-H club in Zavala county. The Clover Kids continued to serve as a unique 4-H feeder program for 4-H recruitment and enrollment expansion efforts for all 4-H clubs in the County.



4-H Clover Kids group enrollment by Clover Kids Group over the past 3 Clover Kids year(162 total) and a potential of 145 new 4-H members in the next 3 years.(Source 4-H Connect-And Parent Interviews-Zavala Co.)

4-H and Youth Development



FUTURE ZAVALA COUNTY 4-H MEMBERS 2017-2020

Acknowledgement:

The Zavala County 4-H and youth development committee acknowledges L&W Flying Service for sponsoring all of the awards for this program since its inception. Thanks are also extended to each 4-H Clover Kids Group managers and Pet Barn Stores in San Antonio for making rabbits available to the participants and all the parents that believe in the program and encourage these young participants to continue in the 4-H program in the future. The program will continue for years to come.

4-H and Youth Development

Other Zavala County 4-H and Youth Development Highlights 2016



↑La Pryor 4-H One Day 4-H community Service-School Supply collection for Louisiana Flood Victims



Batesville 4-H Robotics Program Recognizes 4-H Robotics Leader and Science Teacher-Batesville School

Prairie View A&M University Community & Economic Development Unit

Is a resource and assistance center for limited resource families and individuals in pursuit of increasing their standard of living through entrepreneurship, community program participation, home ownership, and government assistance programs. The Community & Economic Development (CED) staff offers professional consultation and technical assistance for entrepreneurs and community organizations looking to start or expand their operations.

CED staff provides insight on the local business climate and feasibility of the proposed business idea or expansion and provide local government and community analysis of critical economic development issues. In addition, the Prairie View A&M CED staff provides small scale agricultural producers technical assistance and small business counseling that support profitable and sustainable business operations. Our staff provides group training that includes global market debt management, accounting, business management and financial forecasting with a focus on small women and minority-owned businesses and producers.

2016 Program Highlights for Zavala and Surrounding Counties served by PVAMU-CED Agent, Phyllis Varnon, include one on one appointments with regional businesses, attending and presenting at conferences, (2,500+ contacts) agent trainings provided by Texas AgriLife and Prairie View Extension, (27) outreach to community-based economic development organizations, (56), veteran's programs, (3) and stakeholders on local, state and national levels, (16).

Examples of the groups and organizational audiences include: El Progress Club, TEAM Uvalde, Ag Women, MRGDC, Eagle Ford Consortium, Texas-Mexico Border Coalition, Governor's Small Business Forums, Pioneer Leaders, National Association of Women in Business, *Texas Tribune*, Texas Association of

Community Economic Development

African American Chambers of Commerce, Economic Development Administration, Minority Landowners, Battleground to Breaking Ground, Extension Rural Leadership Conference as well as Extension conferences, "Spring and Fall Faculty", "Excellence Academy" and PVAMU Extension Conference.



Live Broadcast Radio Show, "Talk About Texas", KKYX 680 AM, acquainted our South Texas audience, (144,500 listeners) with the PVAMU "Business in Development" (BID) programs to assist women and minority owned businesses certify to do business with the more than 200 universities, colleges, state agencies, regional and local governments. Businesses in the process to become HUBs, technical assistance for existing HUBs and emerging and/or expanding businesses. A few industries represented:



Community Economic Development

Host, Roy Holley, interviewed Texas A&M AgriLife, Prairie View A&M Extension, and Texas AgrAbility staff who provided insight on an outstanding series of veteran and small farmer and rancher information and resource workshops, “**Battlegrounds to Breaking Ground**”, held throughout Texas. In 2016, there were 2 workshops held in the regional area, Sandy Oaks Olive Orchard in Elmendorf, (32), and Texas A&M International University in Laredo, (48).



A **HUB** (*historically underutilized business*) **Workshop**, sponsored by IBC Bank, was held in Uvalde with guest trainer, Mr. Lloyd Hebert, PVAMU Specialist, as part of the “**Business in Development**”, (BID), Program. Local HUB businesses participated in the “hands on” training to prepare and submit winning proposals was also promoted via the broadcasts.



In November, to kick off the **International Spinach Conference** held in Bexar and Uvalde counties with “hands-on” crop tours in Zavala County. “Talk About Texas” highlighted the history of spinach production in the Winter Garden Region of South Texas. Also, how Crystal City became internationally known as the “*Spinach Capital*” of the world thanks to old friend, *Popeye*



Representatives from around the world attended this historical gathering. Researchers, producers, Extension specialists and agents came together to share information, best practices and most importantly, bring recognition to the area. (*Next conference is scheduled in Spain*)



What do you think
is the biggest
challenge facing
rural communities?

The **Texas Rural Leadership Program** with the theme of *“Be at the Table and Sit a Spell”*, came to be the key to success for the 2016 CEP projects. Being *at the table* as a key contributor to help identify regional needs, immediate and future, and brainstorm with decision makers to address and set forth plans to develop appropriate plans of action has been crucial.



Community Economic Development



We cannot
always build
the **future** for
our youth, but
we can build
our youth for
the future.
—Franklin D. Roosevelt

“Our Youth of Today are the Leaders of Tomorrow”, 4-H is blessed with leadership mentoring the hyper-excited kids in the programs in the surrounding counties. Zavala County clubs are solid and CEP has a strong presence as well. Participating in projects such as Financial Literacy with Zavala County Bank, 4-H One Day collecting much needed school supplies for students adversely affected by recent flooding in Louisiana, Annual Christmas Boxes for the International Samaritan’s Purse project, judging Record Books, presentations in the Consumer-Decision contests and Photography projects on the District level has been most rewarding for the judge as well as the contestants.



TEAM Uvalde talks fitness



Health and Fitness
Safe Water
Infrastructure
Improvements
Affordable Housing
Strong Leadership



Community Economic Development

Strong agency relationships resulted in overwhelming and somewhat unexpected outcomes. USDA-Rural Development funding became available for home rehabilitation renovation for elderly families in the region. A partnership between PVAMU-CED, USDA-Rural Development and local non-profit, *Mission Border Hope*, was forged. CED facilitated informational seminars throughout the region and Mission Border Hope was (is) instrumental in processing the applications for the home repairs. More than 200 applicants have been reviewed and **86 awards** have been made with a regional financial impact of **\$645,000**. (*On going project*)



In addition to the outreach efforts, a workshop was held for area contractors to inform them of requirements and timelines for completion of the projects. The PVAMU-BID Program was presented and three of the attending contractors started the certification process and two have completed and are now HUBs.



A most important “business save” came in the form of a referral. To preserve time and research, contact was made with a previous client with relevant experience. The conversation led to an issue that needed to be addressed immediately. Calls were made, documentation received and evaluations were completed.



As a result, a business was assisted with financial consulting, employees were retained and the rest is SUCCESS.

Business Assisted-Jobs Saved



► Result:

- Saved loan \$598,000
- Saved 20 jobs \$600,000
- Referred to refinance with CDFI



Extension Education in Zavala County

Personnel



Marcel Valdez, CEA-ANR/CoCoord
Texas A&M AgriLife Extension Service

Contact Us:

Texas A&M AgriLife Extension Service
Zavala County
221 N First Ave. Crystal City, Texas 78839
Voice: 830-374-2883 or 830-374-5373 Fax:
830-374-3351
e-mail: Zavala-tx@tamu.edu
website: Zavala.agrilife.org



Phyllis R. Varnon, CEA-CED
Cooperative Extension Program-Prairie View A&M



Betty C. Avila, Office Manager