

Pest Cast

The Row Crops IPM Newsletter for the LRGV, a cooperative project of Texas AgriLife Extension Service and the Cotton & Grain Producers of the lower Rio Grande Valley

John W. Norman, Jr.
Editor

Volume XXXIII

Issue 13, June 24, 2011

General Situation: Rain. Now that grain sorghum and corn harvest is ongoing and very shortly, cotton harvesting will be now comes the rain. Reports based on doppler radar estimates showed that some areas, particularly in the dryland areas of Willacy county, received from 1 to near 9 inches of rain. The only reports heard on news media was of 6 plus inches near San Perlita in Willacy County. It is now a wait and see approach to crop damage assessments. See included Doppler radar picture from National Weather Service Storm Total Precipitation web site below.

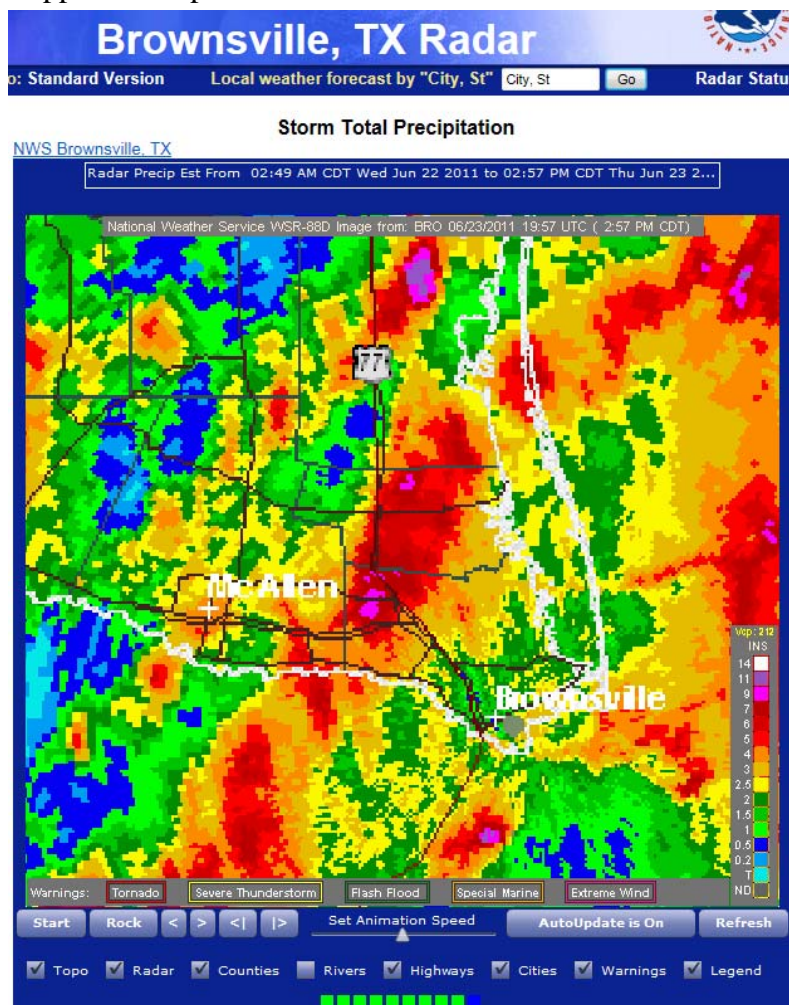


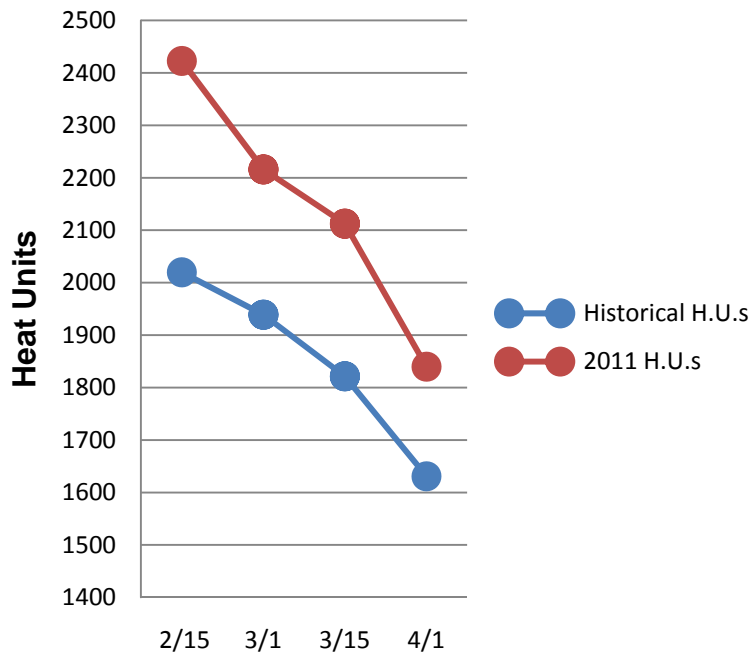
Figure 1: National Weather Service Storm Total Precipitation Doppler Radar Rainfall Estimates, June 23, 2011, 2:57 p.m.

Cotton: More open bolls in dryland fields were observed this week. Open boll counts ranged from 0 to 90 percent. Most fields were showing between 30 to 50 percent open bolls. Defoliation was on the increase in many Willacy county dryland fields this week. Further defoliation will depend on how much cotton is left following the rains. Based on the image from NWS, most of the rain fell along State Highway 77 from central Cameron County to north of Willacy County.

Irrigated fields, on the other hand, had from 0 in many fields to near 60 percent open bolls in a few fields. Irrigations were still being applied where the crop warranted an additional irrigation. The rains stopped most irrigations until soil moisture in each field can be assessed. Boll maturation was well advanced in most irrigated fields and crop yield potential looked very good this week. The rain on Wednesday will likely end the

need for further irrigations in most fields.

H.U. Accumulation by Planting Dates



Insect activity was primarily whiteflies in some Hidalgo county fields, and Verde bugs in eastern Cameron County. Cotton fleahoppers were reported to have been treated in some fields in scattered locations around the Valley.

Cotton heat units were going higher until the rain started on Wednesday. Slightly over 30 heat units per day were being documented with the 100+ daytime temperatures and 80+/- at night as lows. Shown below is the heat unit accumulation comparison between 2011 and the historical average of 2006-2010.

An error in editing was made in last week's Pest Cast regarding heat unit accumulation

for cotton. It takes 2600-2800 for a two bale per acre average yield whether it is irrigated or dryland, not just irrigated cotton. Other factors such as moisture supply, solar radiation and field soil types will impact final yield as well. Even if 2600 to 2800 heat units are obtained, if the crop runs short on moisture, 2 bales per acre are not likely to be obtained. But high temperatures can limit yields because cotton, like every other crop grown, has limits on temperature extremes and will lose yield potential if those extremes are met or exceeded.

LRGV

BOLL WEEVIL TRAPPING INFORMATION

YTD	2011	2010	2009	2008	2007	2006	2005
	.00268	.00733	.15796	.11355	.21237	.38834	1.97565

Week Ending	2011	2010	2009	2008	2007	2006	2005
4/3/11	.00476	.00672	.19847	.08503	.64118	.48544	0
4/10/11	.00360	.00592	.11633	.30512	.40392	.37552	0
4/17/11	.00114	.00312	.23686	.17102	.36414	.88875	6.47392
4/24/11	.00133	.01426	.38106	.05425	.23751	.15855	3.48685
5/1/11	.00043	.01528	.09081	.09113	.18227	.08629	1.70269
5/8/11	.00077	.00825	.05548	.08168	.07073	.09976	.73028
5/15/11	.00174	.00291	.02454	.07013	.17113	.09204	.72057
5/22/11	.00234	.00140	.10516	.08410	.06717	.20786	.58319
5/29/11	.00177	.00336	.20724	.06413	.07770	.12939	.84931
6/05/11	.00244	.01018	.13857	.04752	.13497	1.0014	.82565
6/12/11	.00720	.00794	.17487	.11127	.03975	.46624	1.77066
6/19/11	.00556	.00766	.06249	.13535	.12318	.32430	6.8556

Traps inspected for current week: 46,944

We thank the following sponsors of the Pest Cast newsletter for their very generous contributions toward this effort.



- * Valley Co-op Oil Mil
- * Texas Sorghum Producers
- * Wilbur Ellis Company
- * Hidalgo County Farm Bureau
- * Bayer Crop Science
- * Ross Gin
- * Rio Grande Aviation
- * Dow AgroSciences
- * Dupont
- * Monsanto
- * La Feria Co-op
- * RGV Gin
- * Harlingen Gin
- * Adams Farms
- * Skalitsky Brothers Farm



Contact Info

Pest Cast Newsletter
Texas AgriLife Extension Service
South District 12
2401 East Highway 83
Weslaco, TX 78596
(956) 968-5581
E-mail: d12south@ag.tamu.edu